

A46 Newark Bypass

TR010065/APP/6.2

6.2 Environmental Statement

Figure 9.3 Superficial Deposits

APFP Regulation 5(2)(a)

Planning Act 2008

Infrastructure Planning (Applications: Prescribed Forms and
Procedure) Regulations 2009

Volume 6

April 2024

Infrastructure Planning

Planning Act 2008

**The Infrastructure Planning
(Applications: Prescribed Forms
and Procedure) Regulations 2009**

A46 Newark Bypass

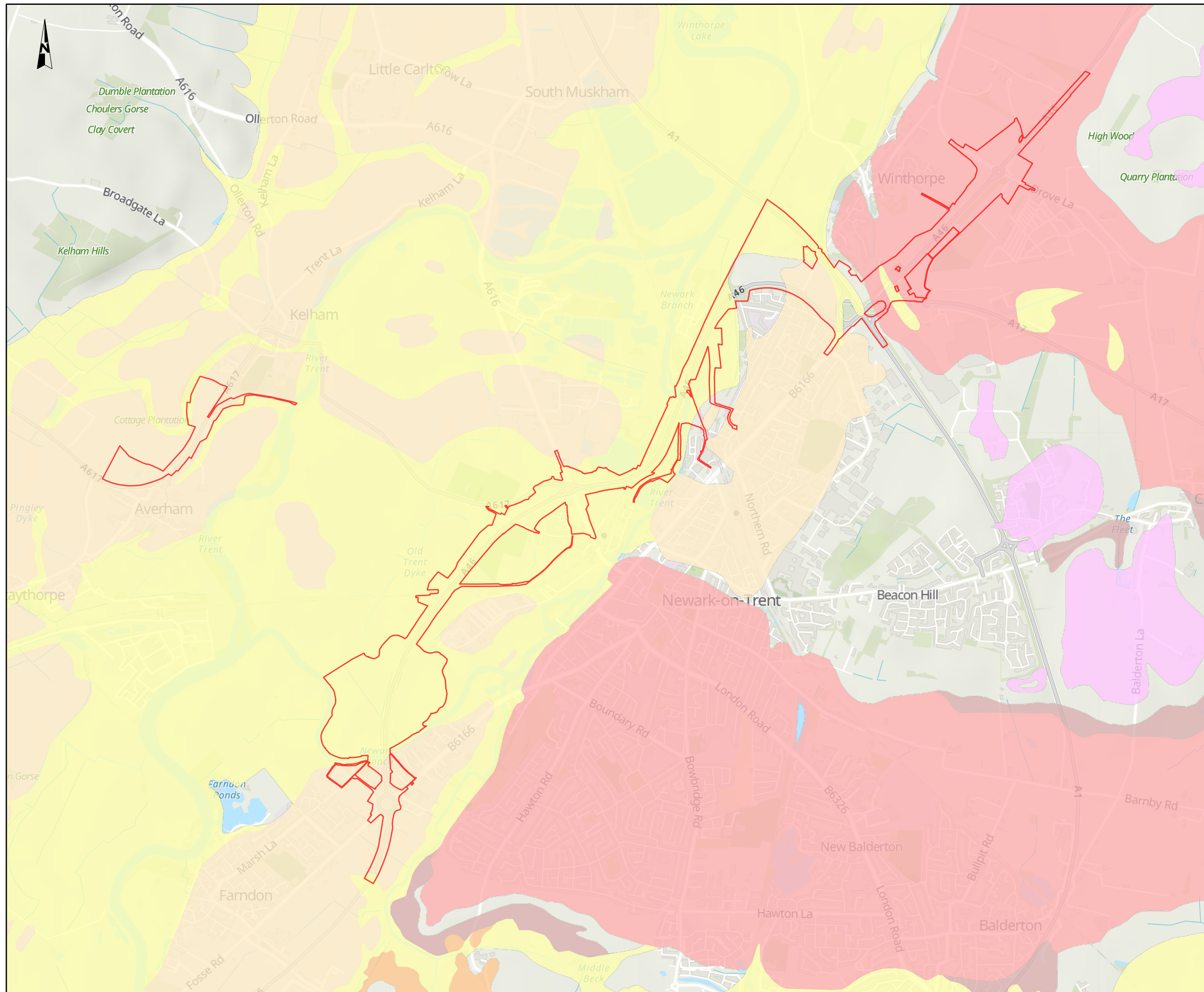
Development Consent Order 202[x]

ENVIRONMENTAL STATEMENT

Figure 9.3 Superficial Deposits

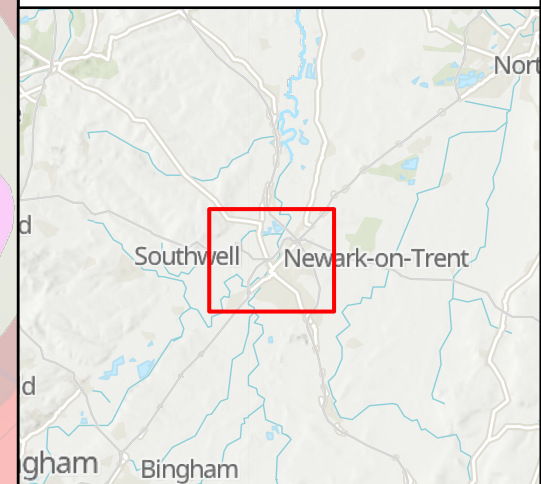
Regulation Number:	Regulation 5(2)(a)
Planning Inspectorate Scheme Reference	TR010065
Application Document Reference	TR010065/APP/6.2
Author:	A46 Newark Bypass Project Team, National Highways

Version	Date	Status of Version
Rev 1	April 2024	DCO Application



NOTES
Source
 Contains public sector information licensed under the Open Government Licence v3.0.
 Contains British Geological Survey materials © UKRI 2023.
Service Layer Credits
 Contains OS data © Crown Copyright and database right 2023
 Contains data from OS Zoomstack

- KEY TO SYMBOLS**
- Order Limits
 - Alluvium - Clay, silt, sand and gravel
 - Balderton Sand and Gravel Member - Sand and gravel
 - Eagle Moor Sand and Gravel Member - Sand and gravel
 - Holme Pierrepont Sand and Gravel Member - Sand and gravel



C01	08/12/23	DCO APPLICATION	BH	NR	HF
REV.	DATE	AMENDMENT DETAILS	ORIG	CHK'D	APP'D

CLIENT

PURPOSE OF ISSUE
 DCO APPLICATION

DEVELOPMENT CONSENT ORDER NUMBER
 TR010065

PROJECT TITLE
 A46 NEWARK BYPASS

DRAWING TITLE
 Figure 9.3
 Superficial Deposits

ORIGINAL SIZE A3 SCALE 1:25,000

DRAWING NUMBER HE 551478	ORIGINATOR SKAG	VOLUME EGT	PROJECT REF NO. HE551478
LOCATION CONWI_CONW	TYPE DR	ROLE LE	REVISION C01
	NUMBER 00004		

© Skanska
 This document is issued for the party which commissioned it and for specific purposes connected with the captioned project only. It should not be relied upon by any other party or used for any other purpose.
 We accept no responsibility for the consequences of this document being relied upon by any other party, or being used for any other purpose, or containing any error or omission which is due to an error or omission in data supplied to us by other parties.

